

EQUINE  
PULSED ELECTRO-MAGNETIC  
FIELD  
&  
DIGITAL INFRARED  
THERMOGRAPHIC IMAGING

Presented by Carrie Wagner, M.Ed.

[Equine-magnotherapy.com](http://Equine-magnotherapy.com)

# TWO HEALING MODALITIES COMBINED

PEMF + THERMAL IMAGING =

Accurate Interpretations

Safe

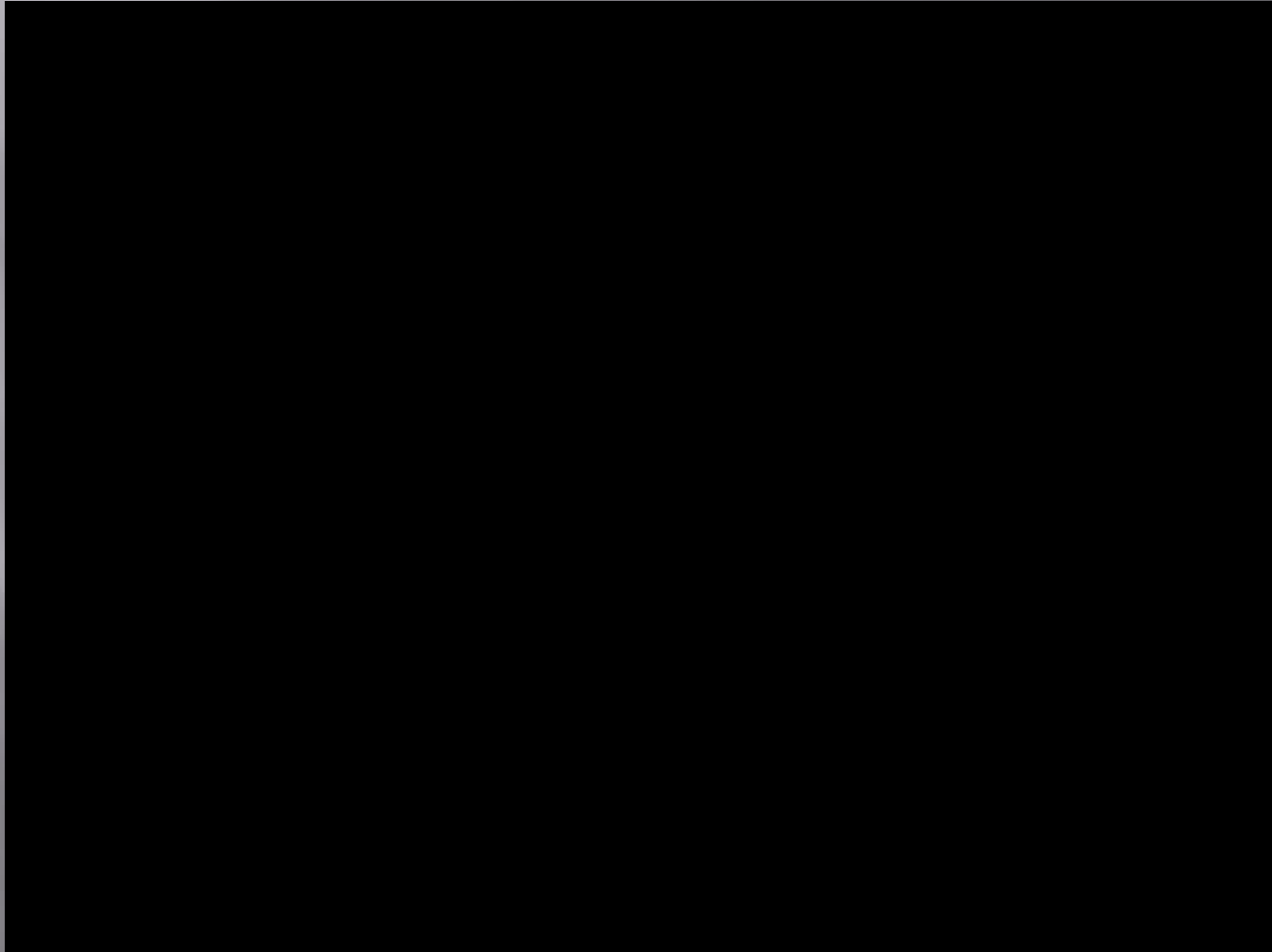
No Side Effects

Faster Healing

Lasting Results

Investment Protection

# EQUINE PEMF DEMONSTRATION



- ▣ Most powerful and technologically advanced systems in the world and they're made here in the USA.
- ▣ Use of our PEMF devices by your clients, patients or yourself will open new treatment horizons.
- ▣ Use this exciting New Modality and realize an Additional Revenue Stream.



PMT-100AT

*All Terrain*

height: 40"

width: 20"

depths: 9"

weight: 25 lbs

VOLTAGES:

120 vac 2amp • 240 vac 1amp

Gauss: 1920G per pulse

TESLA: 192mT per pulse

Frequency: 1Hz to 50Hz

*Most popular for Equine use*

# SAGE CAT November 2011

---

INTERNATIONAL  
*EQUINE, LLC*  
dba WAYWARD WIND FARMS

# Pulsed Electro-Magnetic Field Advanced Cellular Massage/Exercise

IMPROVES:

Meridian System

Acupuncture System

Calcium Transport

Stem Cell Activation

INCREASING BLOOD FLOW TO THE DAMAGED  
AREA

INCREASES PROTEIN SYNTHESIS AND  
HEALING

INCREASES BONE STRENGTH

IMPROVES THE QUALITY OF CARTILAGE IN  
THE JOINTS

ACTIVATING AND REGENERATING CELLS

# Pulsed Electro-Magnetic Field Advanced Cellular Massage/Exercise Results

---

## INCREASES:

- ▣ Performance
- ▣ Circulation
- ▣ Energy to Cells
- ▣ Cell Hydration
- ▣ Bone Density
- ▣ Lean Muscle Mass
- ▣ Flexibility
- Stamina
- Circulation
- Endurance
- Immune System
- Nerve Response
- Muscle Response
- Range of Motion



# Pulsed Electro-Magnetic Field Advanced Cellular Massage/Exercise Results

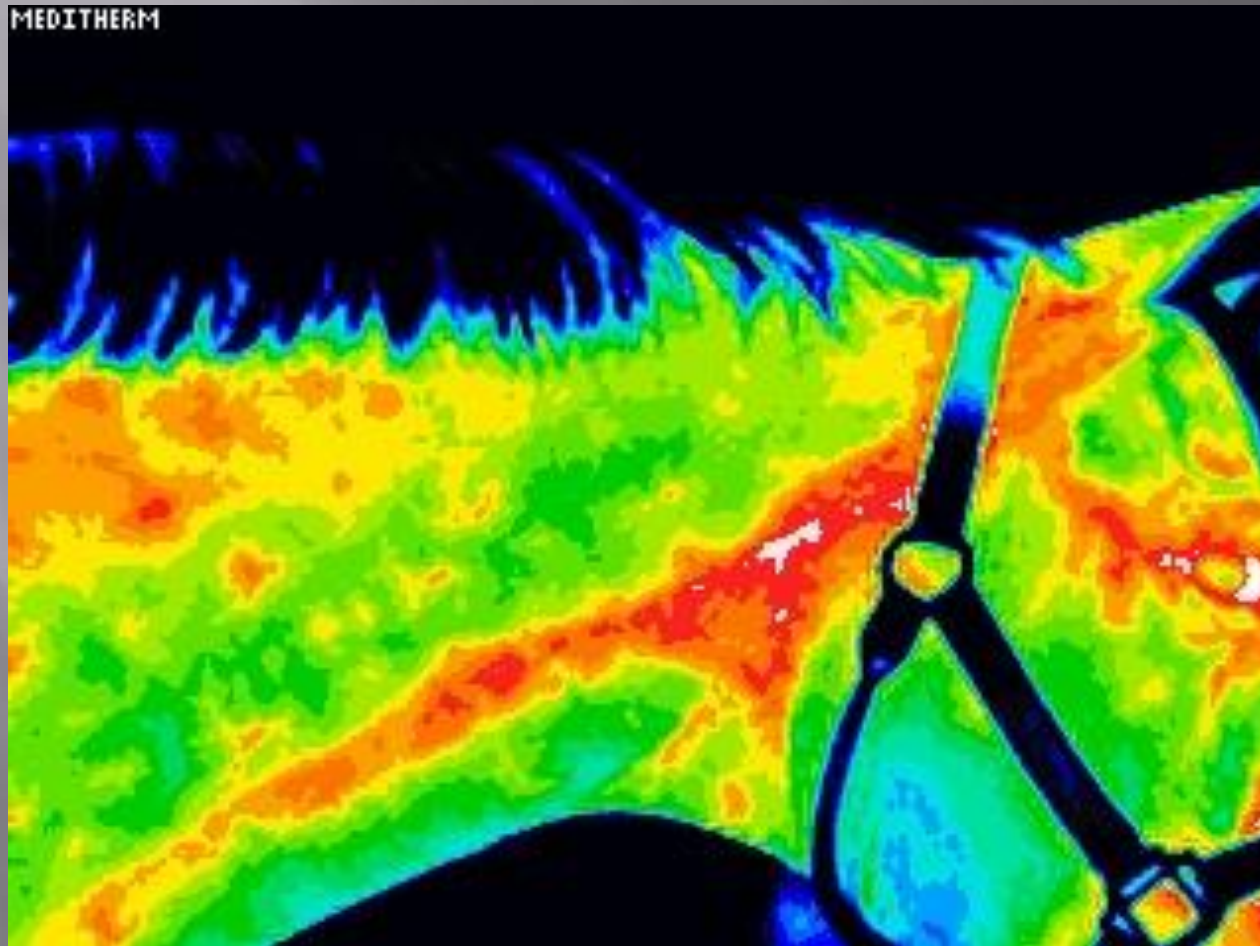
---

## DECREASES:

- Healing Time
- Pain
- Inflammation
- Stiffness
- Swelling
- Spasms
- Stress
- Bruises
- Contusions
- Edema

# THERMAL IMAGING BEFORE TREATMENT: ISABELL

---



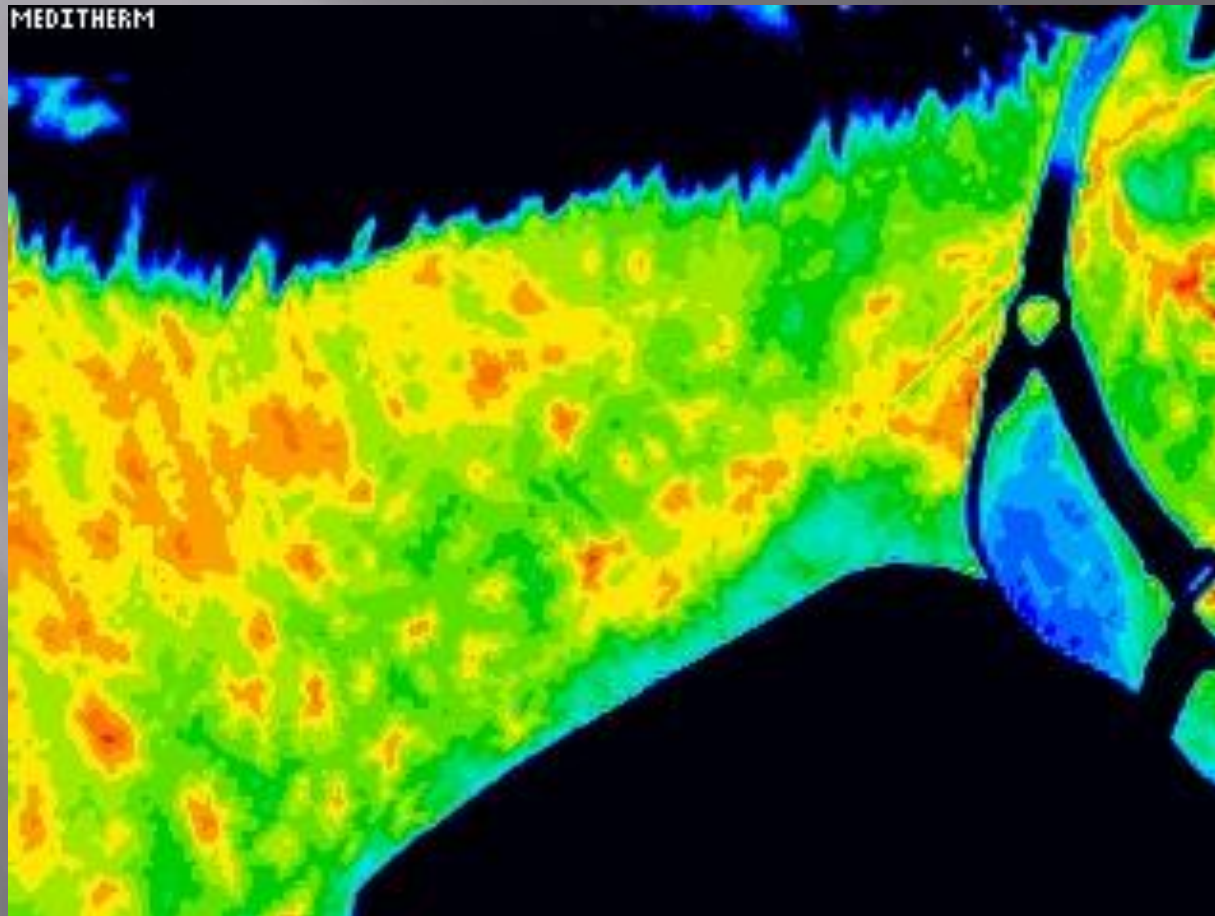
# DURING TREATMENT: ISABELL





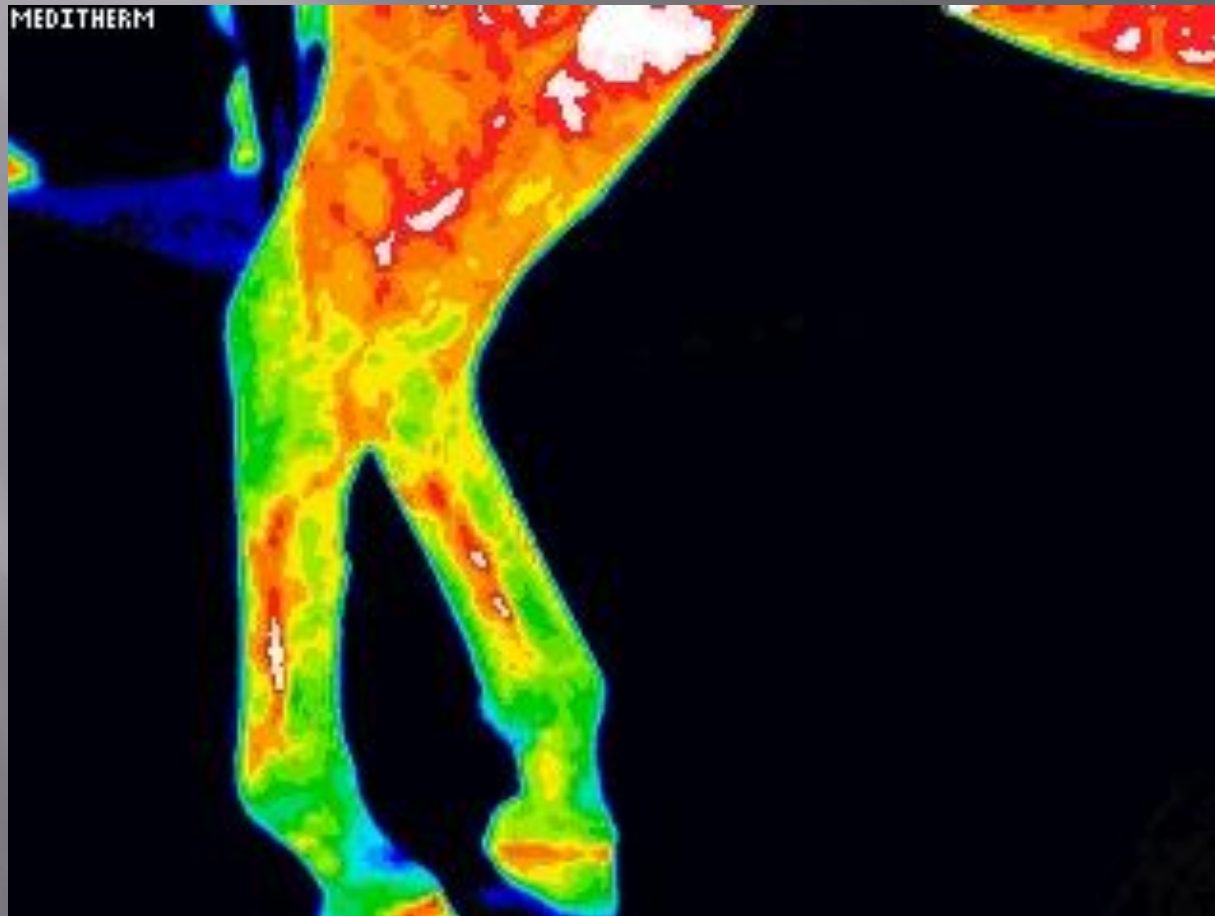
# THERMAL IMAGING AFTER TREATMENT: ISABELL

---



# THERMAL IMAGING BEFORE TREATMENT: FISHER

---



# DURING TREATMENT: FISHER

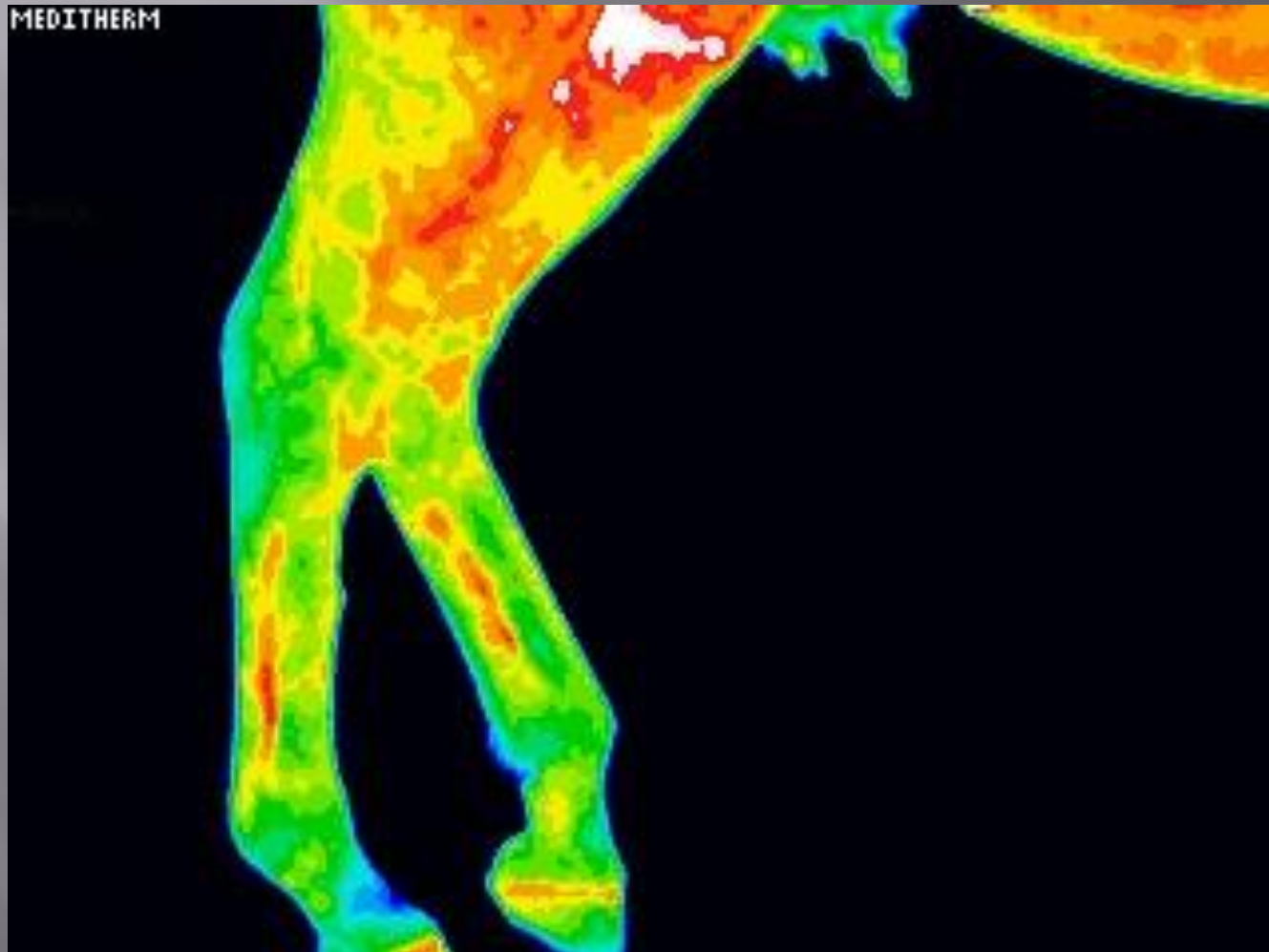
---



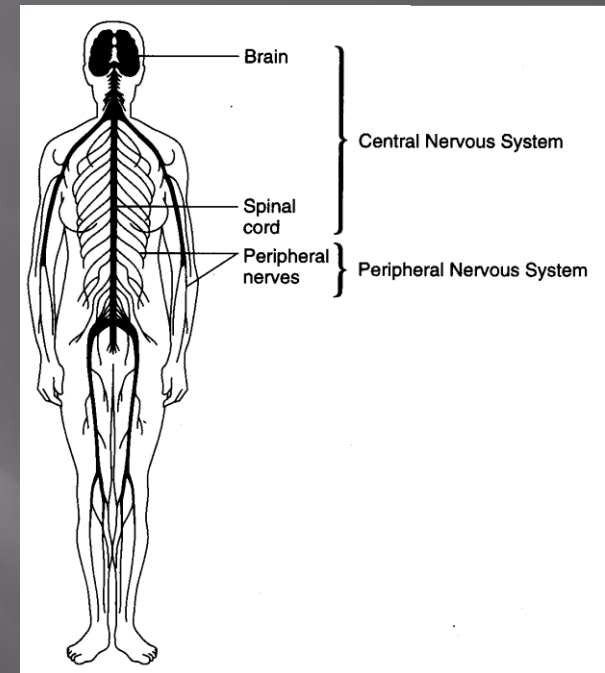
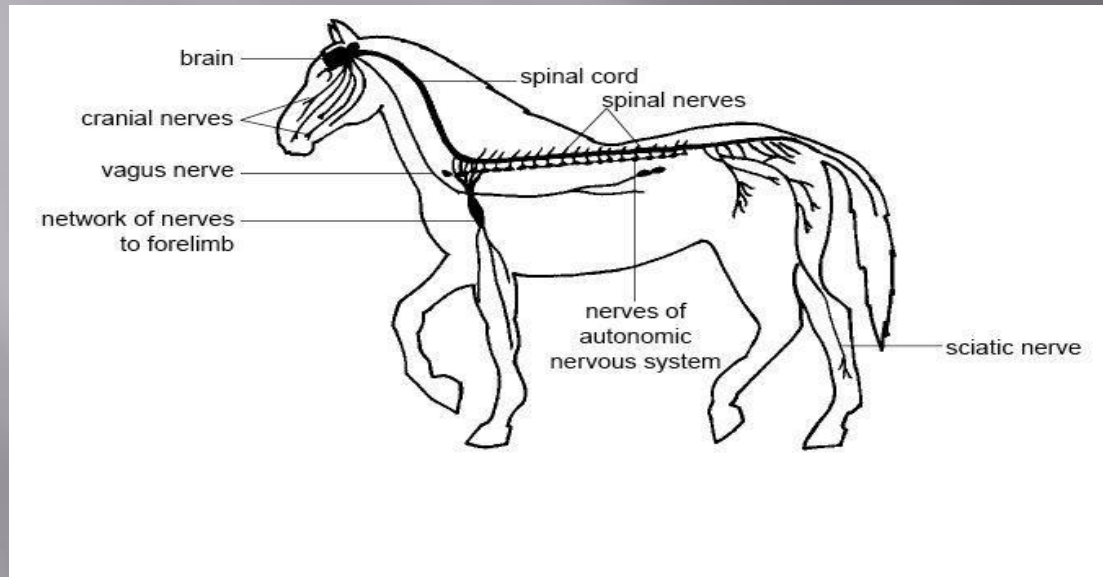


# THERMAL IMAGING AFTER TREATMENT: FISHER

---



# HORSE'S NERVOUS SYSTEM VS. HUMAN NERVOUS SYSTEM

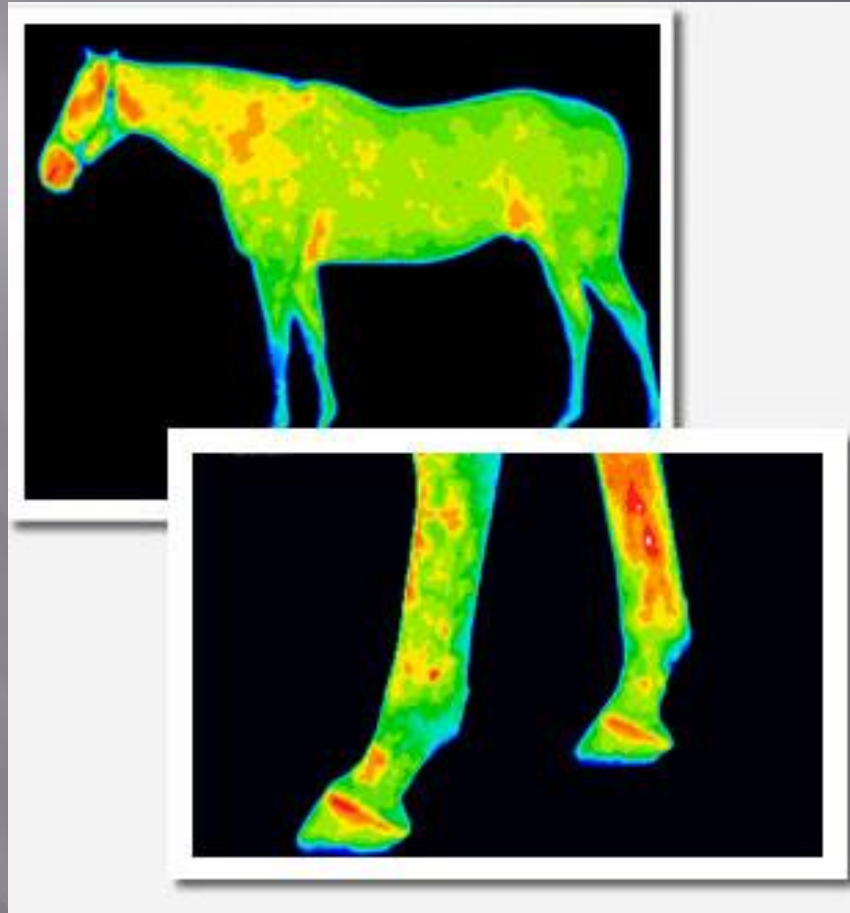


The PEMF machine customizes the range of frequencies to the brain and nervous system, which triggers the acceleration of repair to cells and tissues.



# THERMAL IMAGING

---



Non-invasive, safe and cost-effective tool to detect problems and observe healing process.

# THERAPY SERVICES

---

OUR SERVICES ARE FOR:

- Equestrian
- Polo
- Ponies
- Quarter Horses
- Rodeo
- Thoroughbreds
- Walking Horses
- Western
- Amish Work Horses

**BARN PEMF DEMO**  
**Saturday, August 16<sup>th</sup>**  
**6:00 AM**

*Further details to be announced*

# COMPLIMENTARY THERMOGRAPHY AND PEMF DEMO

Human Demonstration

4-5:30 PM today  
In Registration Room

SHOW SPECIAL

\$4000 OFF

ALL ATTACHMENTS  
HALF PRICE